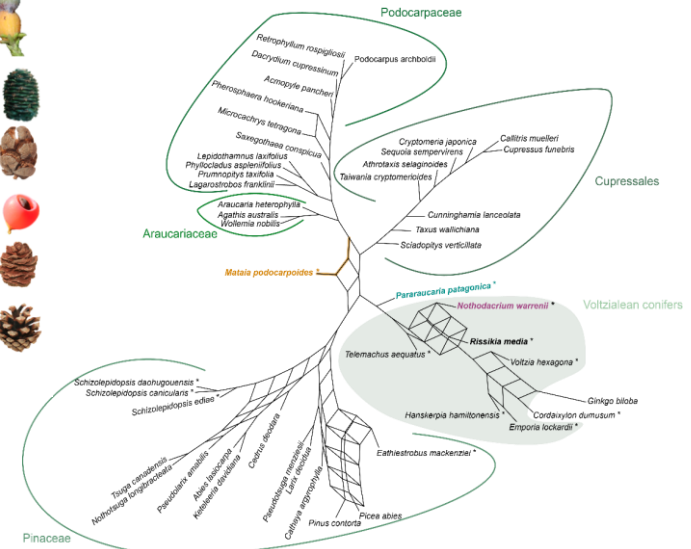
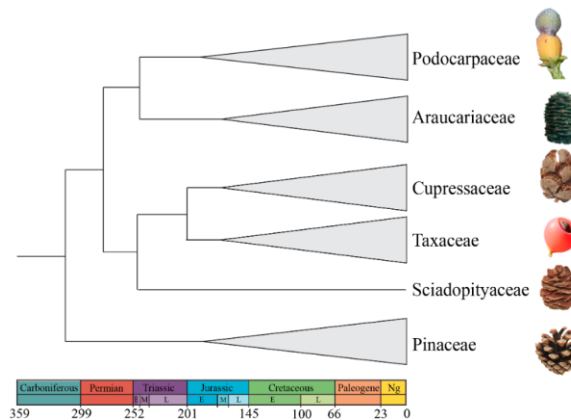




Dr. Kelly Matsunaga
University of Kansas

Homology and heterochrony in the evolution of conifer reproduction

This seminar is a deep dive into the evolution of conifers, synthesizing new and old evidence from fossils, phylogenetics, comparative anatomy, and developmental genetics. I will explore the longstanding question of seed cone homology, as well as some of the processes underlying the evolution of these complex reproductive structures.



November 4th, 4:00 PM
Science B Room 135