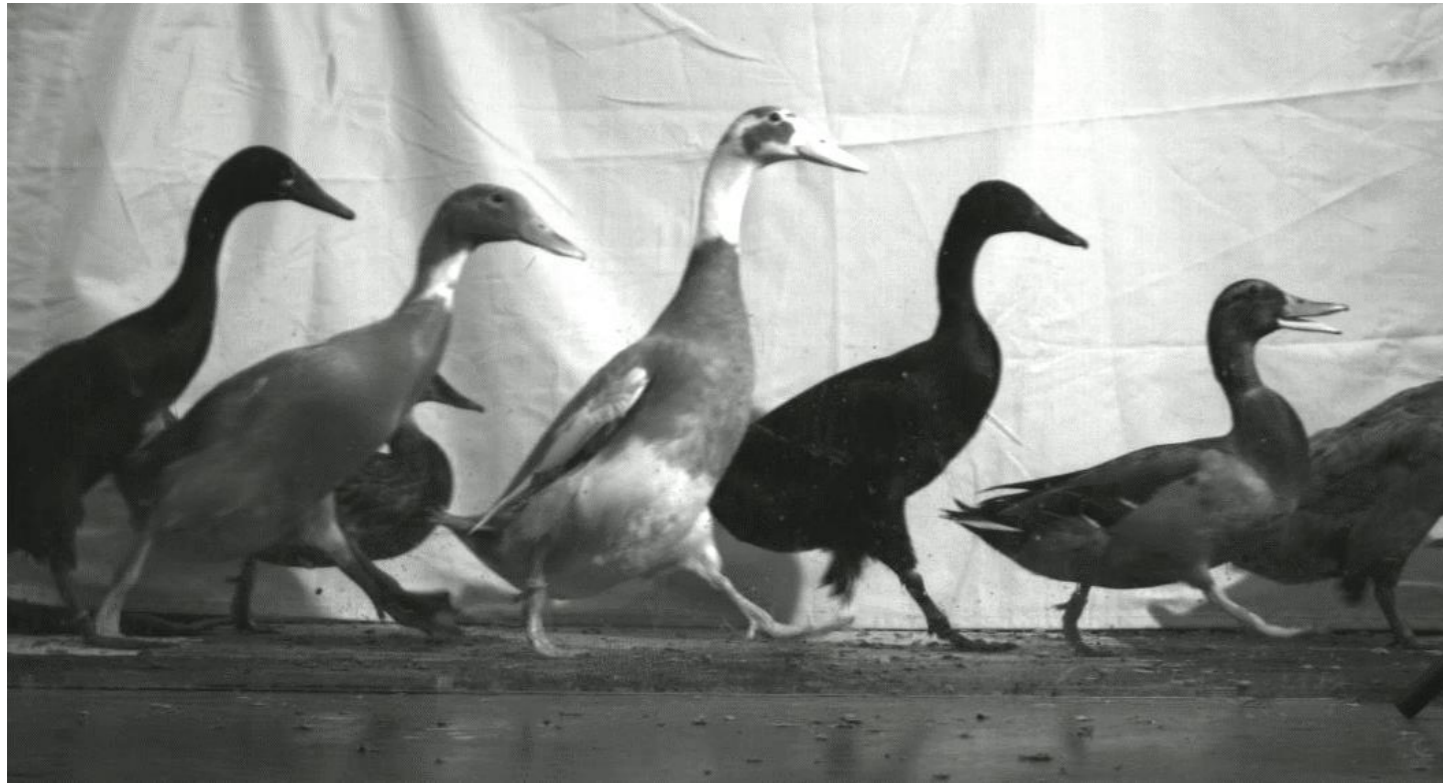


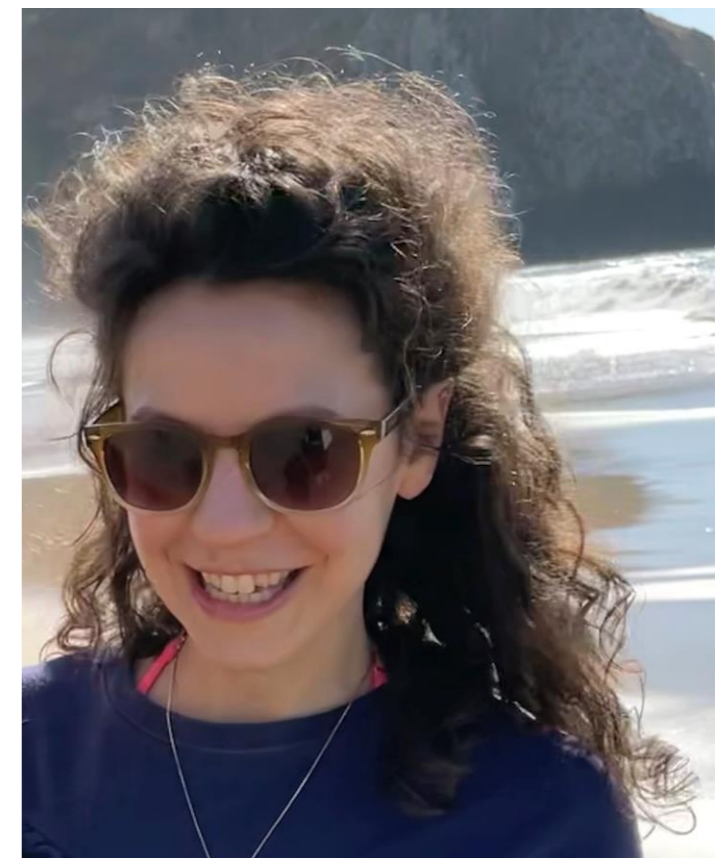
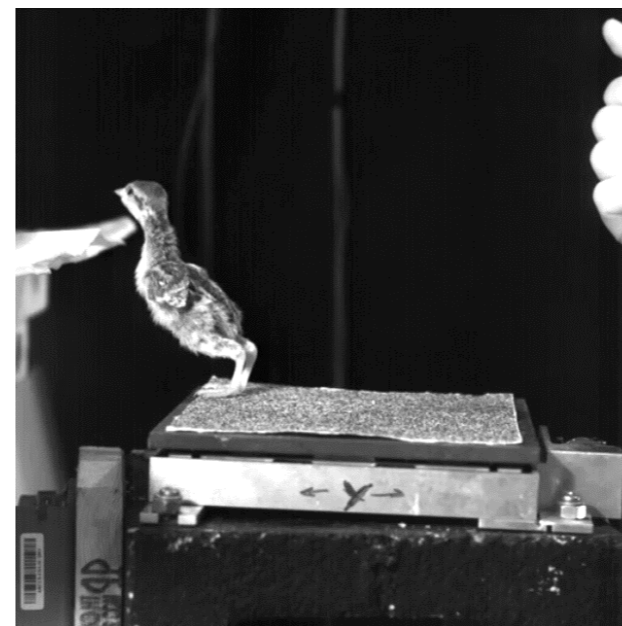
Building a Bird: Locomotor Ontogeny and the Evolution of Avian Flight

Dr. Ashley Heers

California State University
Los Angeles



Using birds and their non-avian dinosaur ancestors as a focal group, my research integrates biological, paleontological, and engineering disciplines to explore how developmental and evolutionary transformations in morphology influence locomotor strategies during the invasion of new environments. The aim of this work is to elucidate the functional and ecological significance of rudimentary locomotor structures — a long-standing challenge crucial to understanding the vertebrate tree of life. I use an arsenal of experimental, 3D visualization, and biomechanical modeling tools to achieve these goals.



FRIDAY, SEPTEMBER 16TH, 2022 4:00 P.M. (PST)

Email the BGSA for the Zoom link: biograd@humboldt.edu

BIOLOGY SEMINAR SERIES
BIOLOGY GRADUATE
STUDENT ASSOCIATION
DEPARTMENT OF
BIOLOGICAL SCIENCES
CAL POLY HUMBOLDT